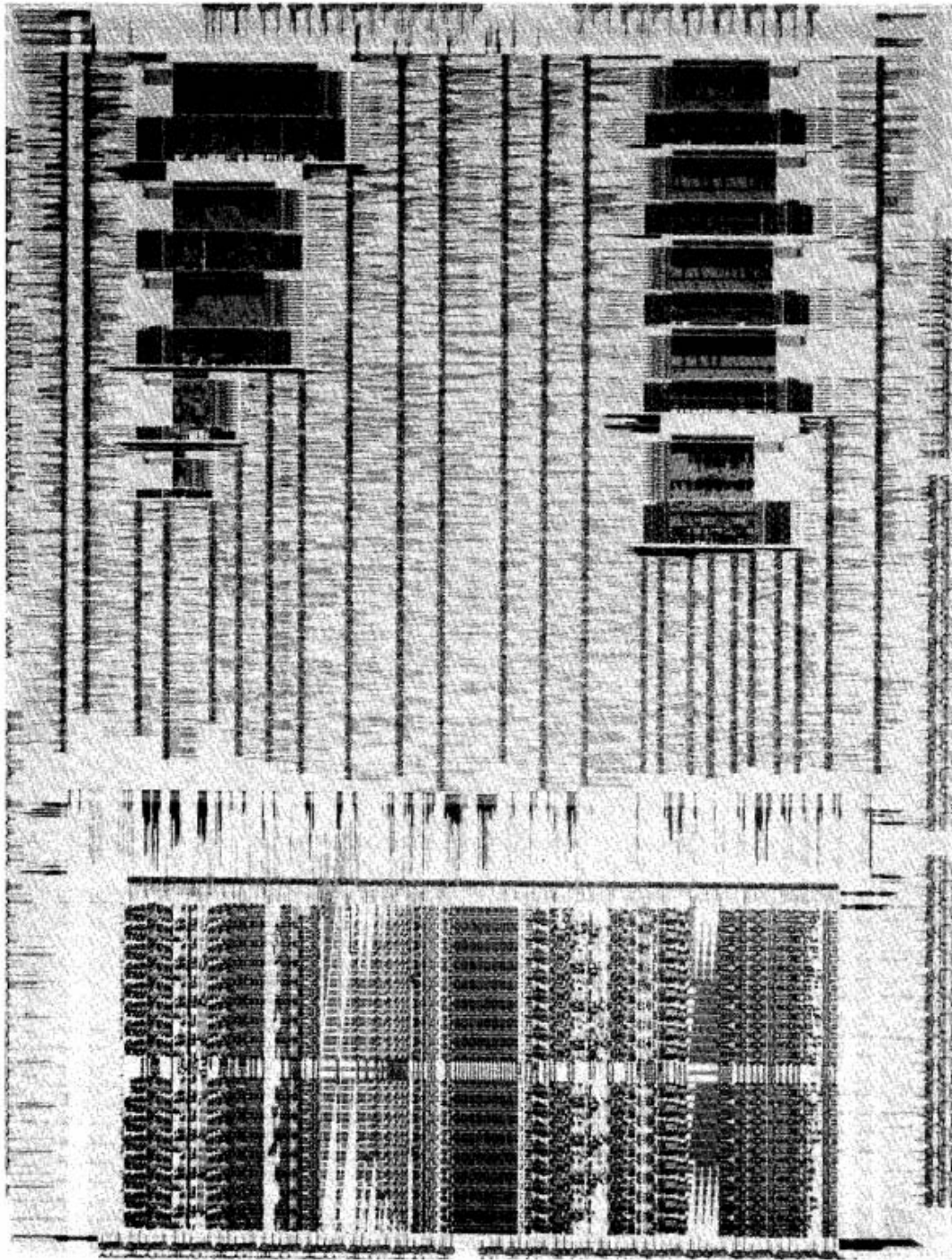


1ST 32B CMOS MICROPROCESSOR

ISSCC1981



A CMOS 32b Single Chip Microprocessor

AFTER THE MAJOR CMOS manufacturing issues had been solved, the world saw a rapid transition to the use of CMOS technology for microprocessor design, and levels of integration continued to increase relentlessly. The first 32b processor was described in this work, and proved to be a herald of things to come, as 32b microprocessors later spread through the market, from high-end workstations to desktop PCs, where they remain entrenched today. The chip also introduced a new compact high-speed style of clocked dynamic circuitry (“domino logic”) which is still being used in microprocessor design today.

B.T. Murphy, R. Edwards
Bell Laboratories, Murray Hill, NJ

L.C. Thomas, J.J. Molinelli
Bell Laboratories, Holmdel, NJ