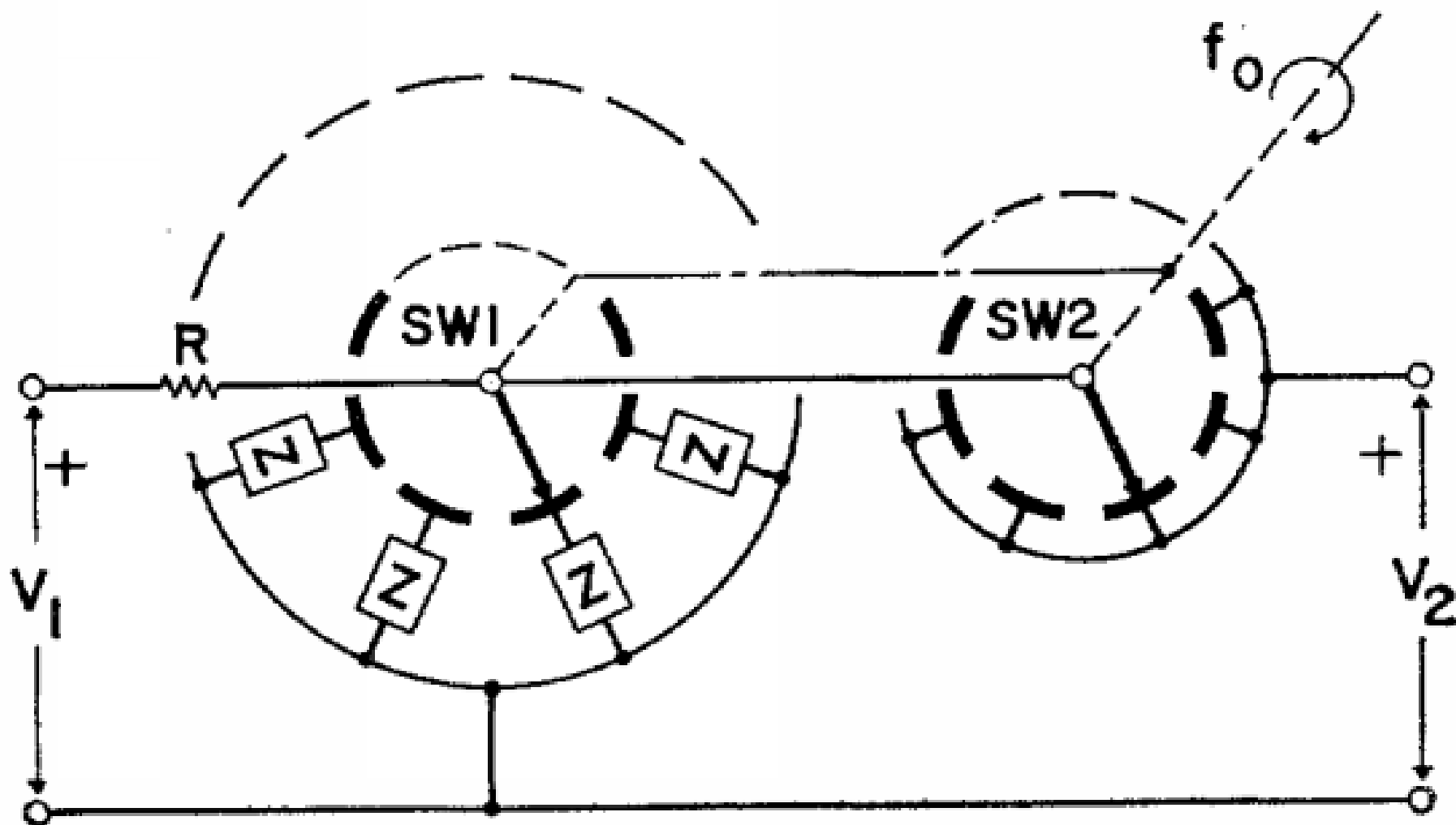


SAMPLED-DATA NOTCH FILTER

ISSCC 1960



Solid-State Sampled-Data Bandpass Filters

IN 1960, FRANKS and Witt proposed a sampled-data (discrete-time) 108kHz notch filter based on discrete solid-state switches and impedance elements. Junction-diode switches were used to replace a mechanical sampling switch.