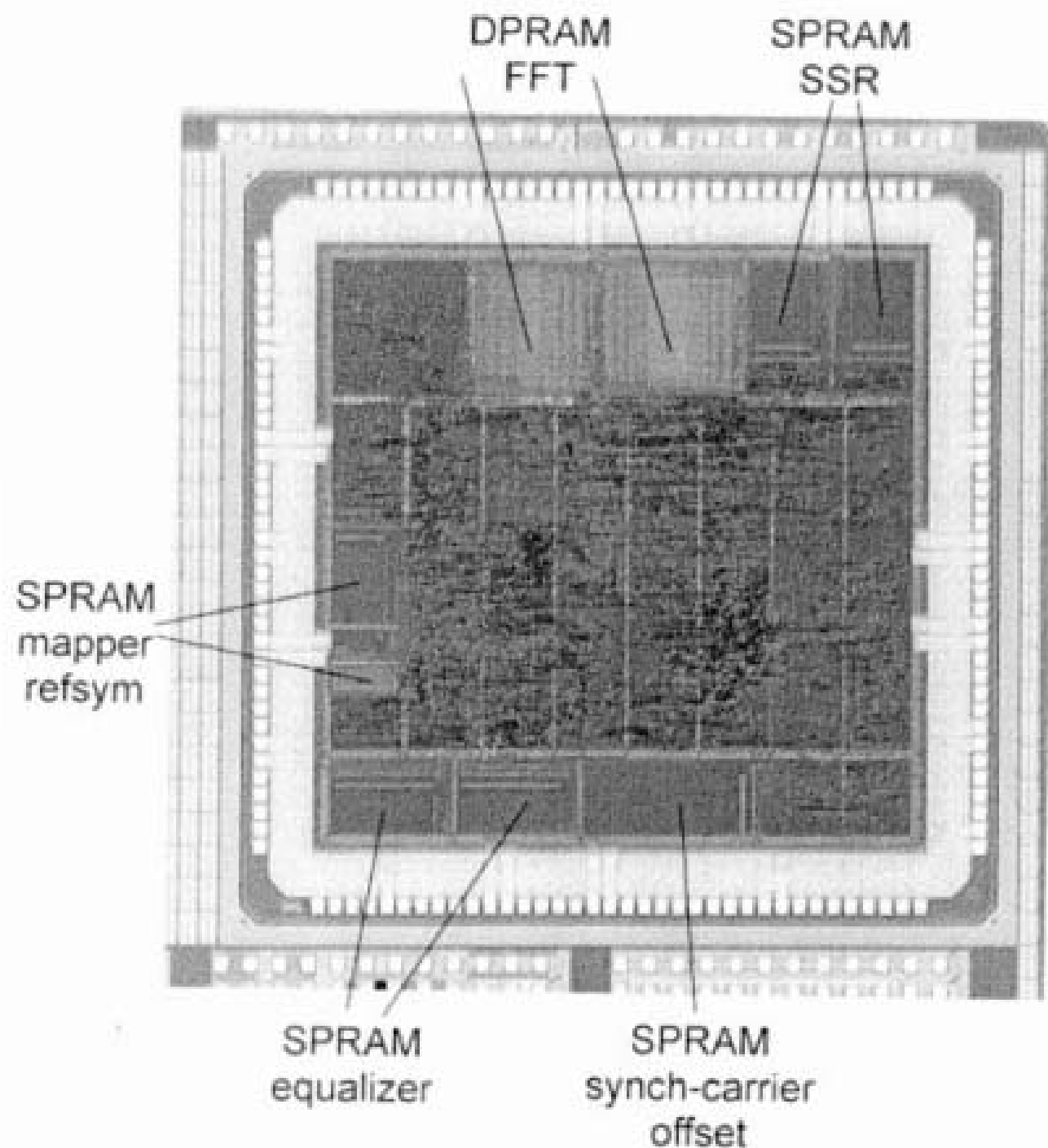


OFDM BASEBAND PROCESSOR FOR WLAN

ISSCC 2000



A Digital 80Mb/s OFDM Transceiver IC for Wireless LAN in the 5GHz Band

BROADBAND TECHNOLOGY recently went wireless, as exemplified by the year 2000 paper by Eberle et al. The paper describes a chip that contains most of the DSP functionality of the baseband section of an IEEE 802.11a wireless local area network modem, supporting up to 54Mb/s data rate.

**W. Eberle, M. Badaroglu, V. Derudder, S. Thoen, P. Vandenameele,
L. Van der Perre, M. Vergara, B. Gyselinckx, M. Engels, I. Bolsens**
IMEC, Leuven, Belgium